



Flat 24, The Custom House Redcliff Backs

, Bristol, BS1 6NE

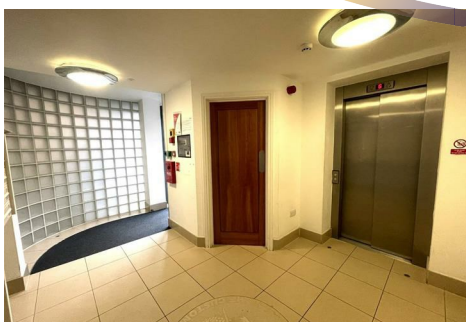
£1,850 Per Month



Let's Rent is Delighted to present this stunning TWO Bedroom apartment situated in the REDCLIFF BACKS, This Apartment Boasts a large master bedroom with a Brand New EN Suite Bathroom and built-in wardrobes, along with a double second bedroom featuring a built-in wardrobe. The SPACIOUS, Light-filled open-plan kitchen/living room comes fully fitted with modern amenities including a fridge/freezer, Gas Hob, Oven, and Microwave, dishwasher, and washer/dryer. The Kitchen was Renewed last year, The highlight of the living space is the balcony overlooking the Harbourside with Ample Sun Light coming through the Apartment, perfect for enjoying the views. 10 Minute Walk to Bristol Temple Meads Train Station, Minutes Away from the City Centre, and close to local shops and amenities, this apartment also includes one allocated car parking space in the secure underground car park below the building & Bike Storage Space- Sofa & TV Included - Available NOW

Council Tax Band: E

EPC Rating: D



Area Map



Floor Plans



Energy Efficiency Graph



These particulars, whilst believed to be accurate are set out as a general outline only for guidance and do not constitute any part of an offer or contract. Intending purchasers should not rely on them as statements of representation of fact, but must satisfy themselves by inspection or otherwise as to their accuracy. No person in this firms employment has the authority to make or give any representation or warranty in respect of the property.